



Sentry Tools for PC Manual

For Windows® XP, 7, 8, and 8.1 Operating Systems

World Headquarters

Pyramid Technologies, Inc.

1718 North Quail

Mesa, AZ 85205 USA

480-507-0088 FAX: 480-507-1922

www.pyramidacceptors.com

[About](#)

[What You Will Need](#)

[Running the Application](#)

[Modes of Operation](#)

[Pair a new Set of Devices](#)

[Pairing a New Phoenix Printer to an Existing Sentry](#)

[Replacement Sentry Security Modules](#)

[Using Sentry Tools Across Two or More PCs](#)

[Expanding your Location](#)

About

Sentry Tools is a PC application that enables you to cryptographically pair a Pyramid Sentry Security Module to your set of Pyramid Phoenix Printers. Once a Sentry is paired with a Phoenix, any redemption ticket printed by the Phoenix will be accompanied by a code that validates the ticket's value and authenticity.

One Sentry device can secure up to 20 Phoenix Printers at your location. For larger installations, we recommend additional Sentry units. New Phoenix Printers or backup Sentry units can be added to your location at anytime using Sentry Tools.

What You Will Need

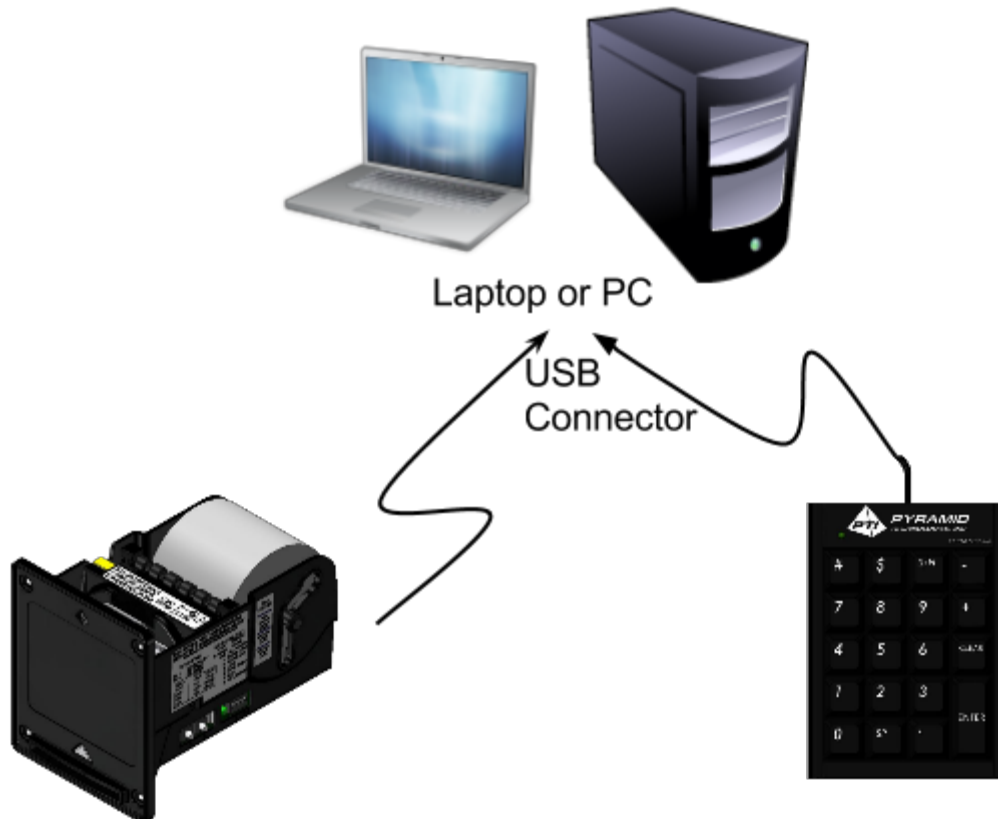
1. Download and install the latest version of Sentry Tools
 - a. <http://pyramidacceptors.com/apps/sentrytools/>
2. At least one Phoenix Printer with Sentry compatible firmware
 - a. If you do not have the required firmware, please contact Pyramid Sales and request Phoenix S10 firmware.
 - b. The Phoenix will also require a USB Type A to Type B cable which is included with the purchase of a Phoenix Printer.
3. One Sentry Security Module

Running the Application

When the application is first launched, you must accept the EULA. Once accepted, you will be prompted to save a new key. This key is automatically generated and only needs to be generated once. It will save to your Documents folder with the name matching your Sentry's serial number.

Modes of Operation

You will most likely be using the first pairing option if you are reading this manual. In this mode, you will need both a Sentry and a Phoenix Printer connected as shown in the diagram below. Note, the order in which they are connected does not matter because Sentry Tools handles identification automatically.

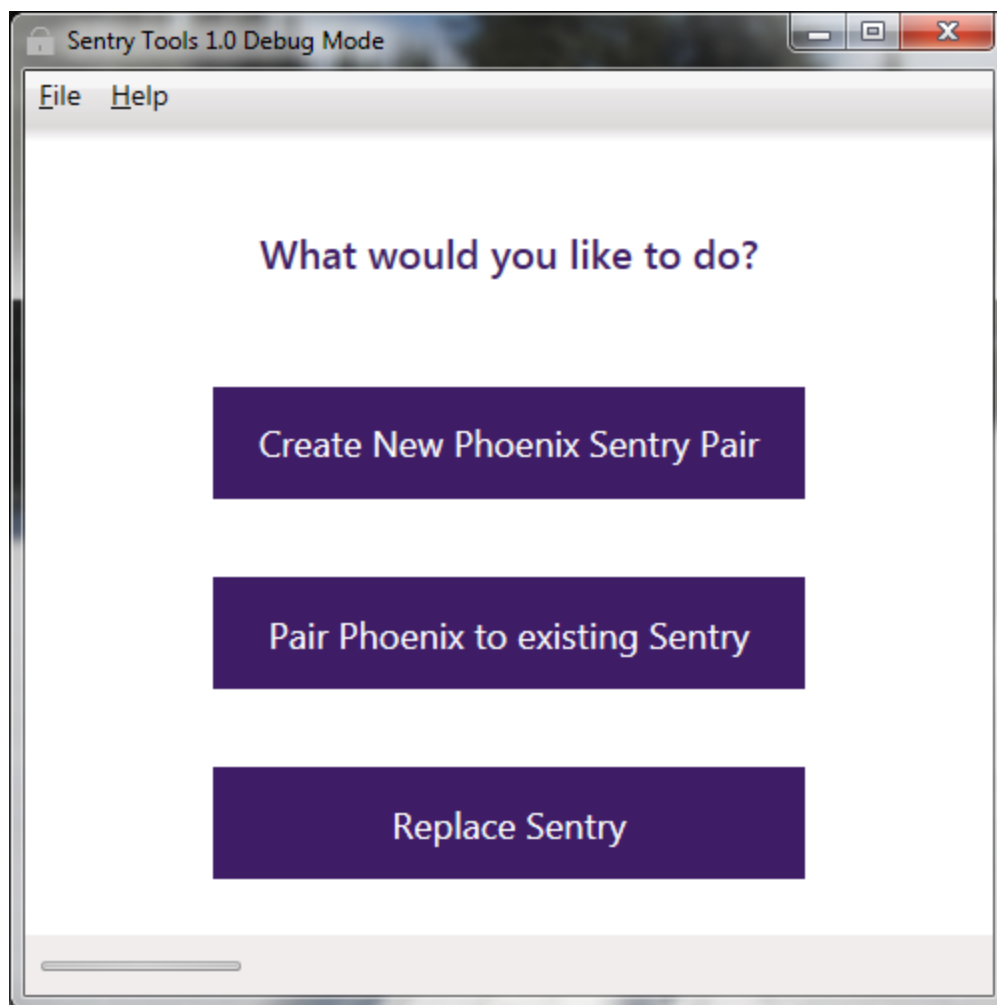


Warning:

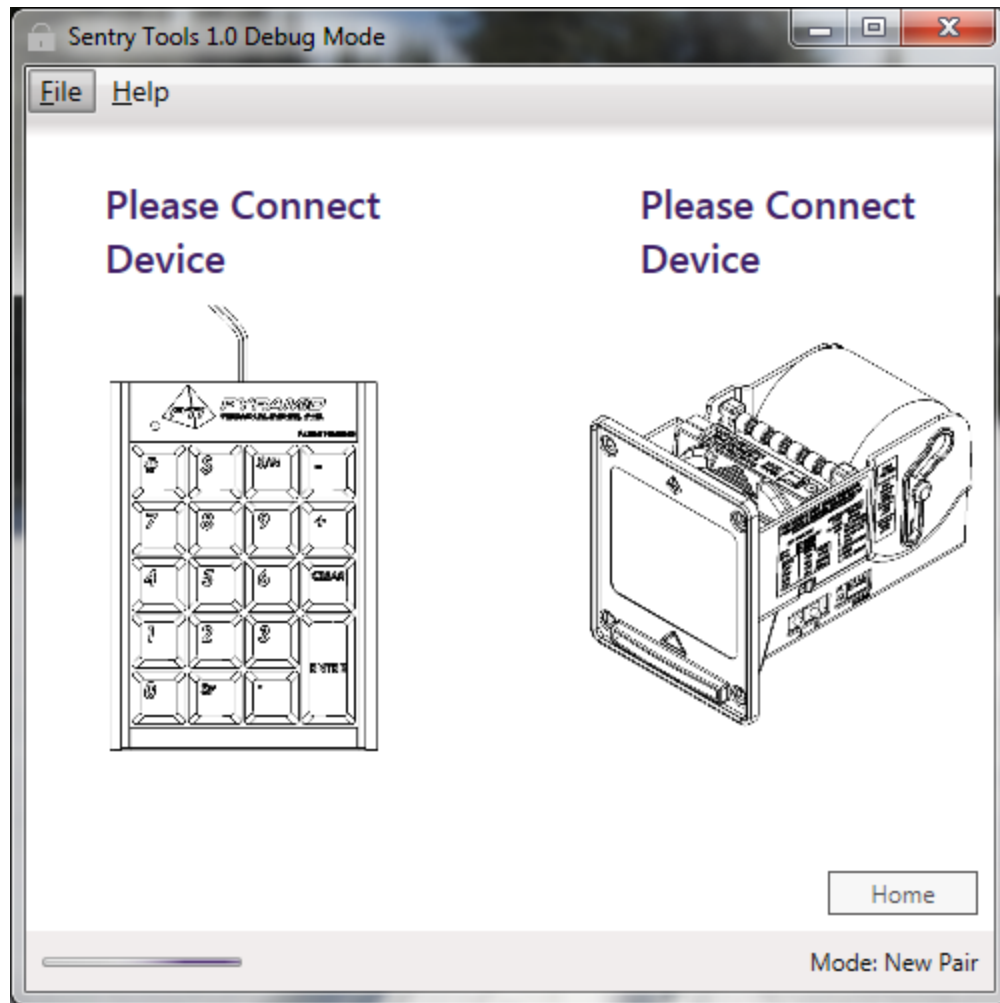
If you are not using the same PC that you initially for pairing, proceed to the section **Using Sentry Tools Across Two or More PCs.**

Pair a new Set of Devices

1. With the application running, the EULA accepted, you will be prompted with the following home screen. Click *Create New Phoenix Sentry Pair*.



2. Please wait while Sentry Tools searches for your devices. This should only take a few seconds on most PCs.



Protip:

1. To test that the Sentry is receiving power, press any key on the keypad. If the LED illuminates red, you have power.
2. The Phoenix Printer requires 12V DC to power up. If the front, blue status LED is not illuminated, check your power source before proceeding.
3. A progress bar on the bottom left will continually run to show that the application is actively searching for your devices. Once all devices are found, the progress bar will stop.

3. When all devices are discovered, the pictures will turn to full-color and current firmware revision will be reported for each device.



Protip:

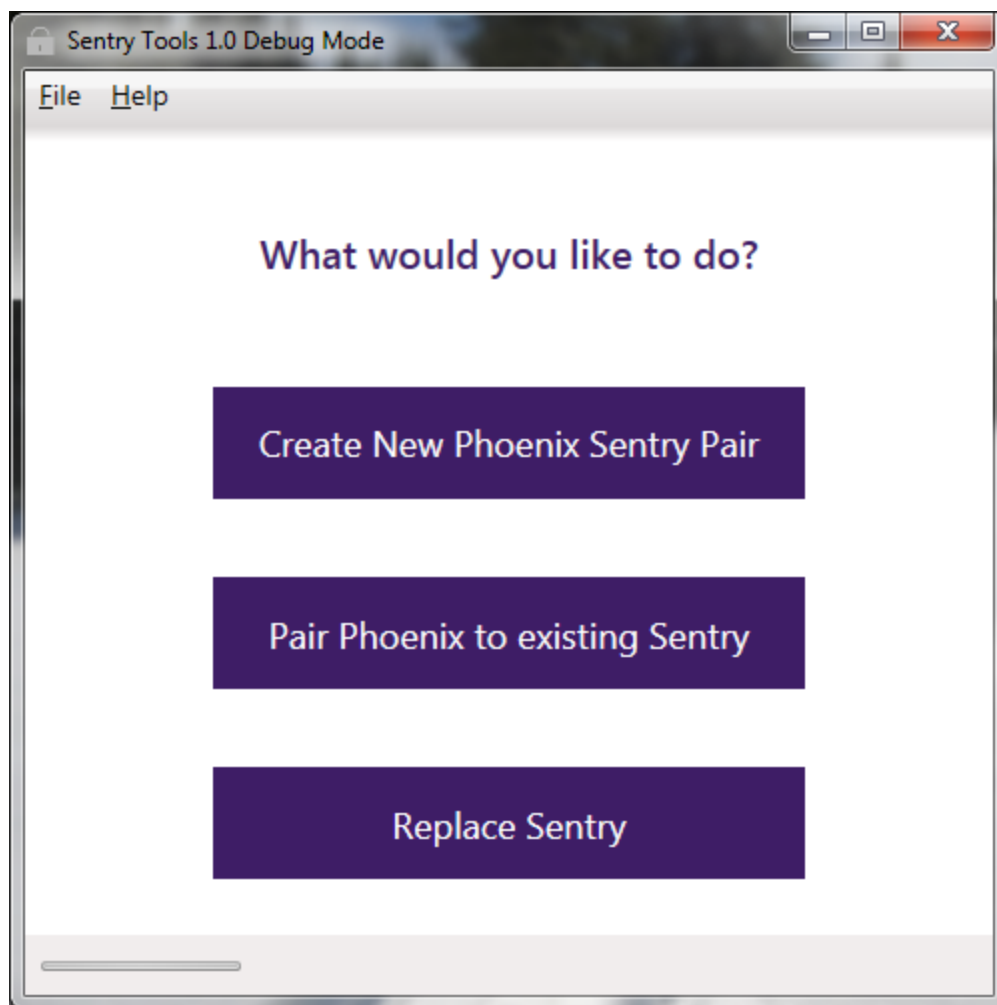
If the Sentry is not responding, please the *CLR* button on the keypad. If the device is still not detected, try disconnecting and reconnecting the USB connection.

You may now click *Pair* to bind these two devices together. If you have multiple printers to pair, simply disconnect the current printer's USB connection and connect the next printer. Once detected, click *Pair*. Repeat for each printer that you wish to pair to this Sentry Security Module.

Pairing a New Phoenix Printer to an Existing Sentry

If you already have a set of Phoenix Printers paired with a Sentry Module, you may your new printers quickly and easily.

1. At the home screen, click *Pair Phoenix to existing Sentry*



Warning:

If you are not using the same PC that you initially for pairing, proceed to the section **Using Sentry Tools Across Two or More PCs.**

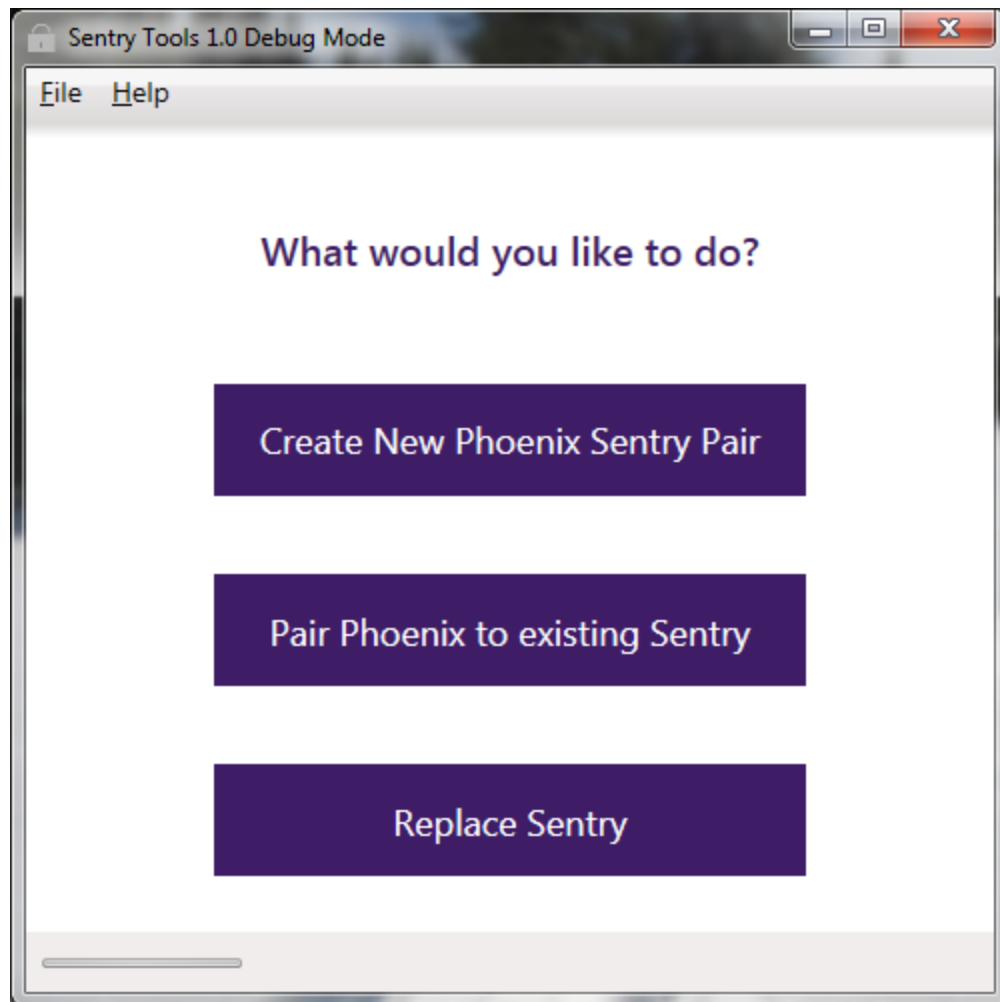
2. Sentry Tools automatically loads the most recently used pairing code. If you wish to load a different pairing code, simply click *File -> Load Pairing Code*. When you are ready, wait for the Phoenix Printer to be detected by Sentry Tools. Click *Pair* and the device will now be protected by your existing Sentry.



Replacement Sentry Security Modules

If you have ordered a replacement Sentry Security Module, it is possible to pair it with your existing printers without having to re-pair each printer.

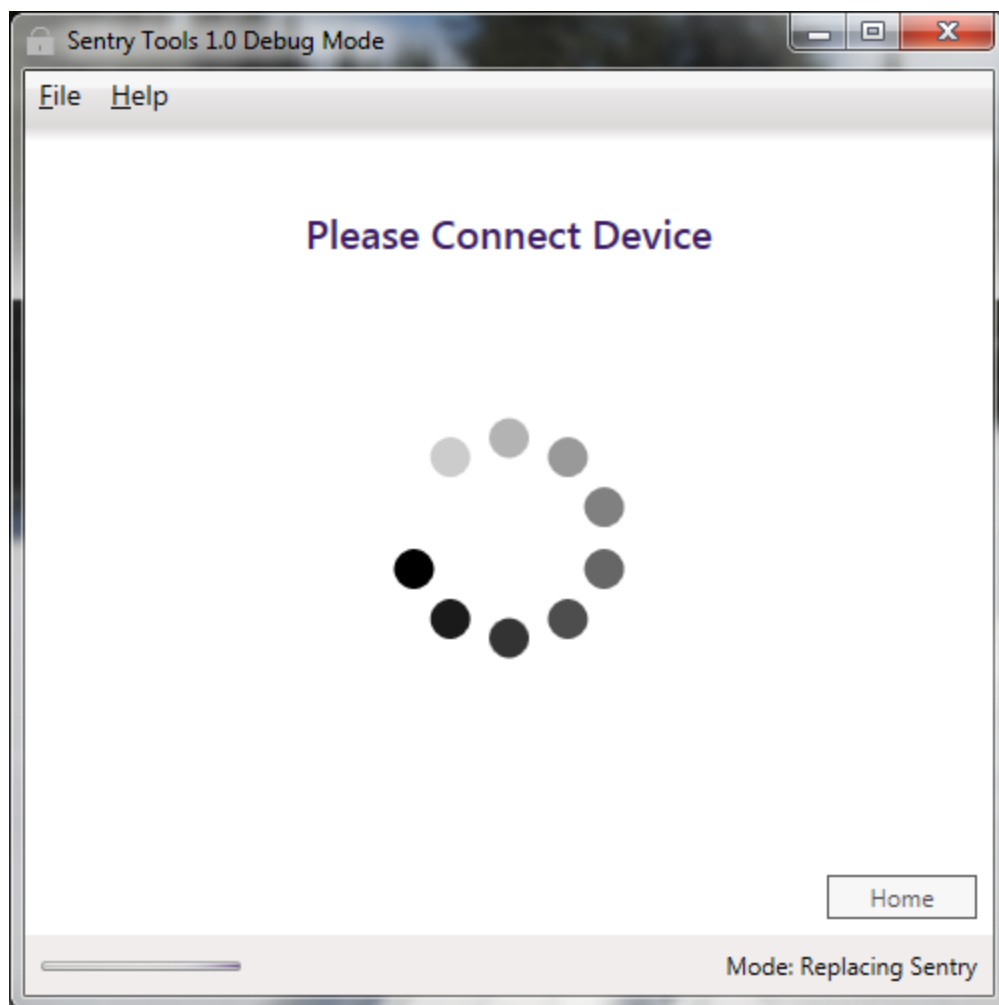
1. When prompted select *Replace Sentry*.



Protip:

Connect only one device at a time while in this mode!

2. You will see a spinning wait icon until a device is detected, in this case a Sentry Module.



3. Once connected, you can click Pair and the application will automatically load your last-used pairing code to bind this Sentry Security Module to your existing Phoenix Printers.



Using Sentry Tools Across Two or More PCs

Sometimes the same PC is not available for pairing your Sentry and Phoenix devices. For this reason, you are forced to save an .stz key file to your Documents folder. This file should be named <sentry_serial_number>.stz where sentry_serial_number is the 9-digit number found on the back of your Sentry device.

Warning:

Keep this .stz file in a safe place like Dropbox or Google Drive because it cannot be recovered if lost!

1. To load your key from the file, click *File -> Load Pairing Code*
2. Navigate to your .stz file and click open. This will make that key the new default pairing key. You may re-save this key at any point in time using the Save Pairing Code option.
3. Backup key to a cloud storage service or thumb drive.

Expanding your Location

Warning:

For the most optimal security, it is recommended to not pair more than 20 Phoenix Printers to a single Sentry Security Module.

Warning:

If using multiple Sentry Security Modules please generate a new and unique pairing code for each Sentry Security Module. Reusing the same code will allow a unique ticket to be redeemed multiple times, once per Sentry Security Module.